

STEWART REALTY COMPANY

STEWART REALTY COMPANY
503 Kelly Street
Charles City, IA 50616

641.228.1111 Office
800.501.1116 Toll Free
www.StewartRealtySells.com

OAK CREEK ESTATES, CHARLES CITY



- Acres 1.00 more/less
- Lot Dimensions Varies
- Yearly Tax \$354-\$366

FEATURES: Easement, Paved Street, Creek, Private Well, Shared Water System, Septic System, Natural Gas Available, Electricity Available, Agency Disclosure Required

Outstanding single family residential building lots. Quiet country living conveniently located East of Charles City, just North of the Cedar Ridge Golf Course and minutes from downtown. Concrete streets recently completed. Several lots perfectly suited for walk-out construction. Picturesque, peaceful setting.

SELLER: Oak Creek Land Development Corporation

LEGAL DESCRIPTION: Lots 1, 2, 3, 5, 13, 14, 16, 17 & 22, Oak Creek Estates subdivision of the NE1/4 of the NE1/4 of S17-T95N-R15, Floyd County, Iowa.

ADDITIONAL INFORMATION: Shared well available on Lots 3, 16 and 22. Oak Creek Estates Owner Association Articles of Incorporation, Bylaws, and Restrictive Covenants available upon request. Annual street light assessment to each property owner. LOT 5 listed at \$50,000.

Offered at:
\$35,000



Presented by:

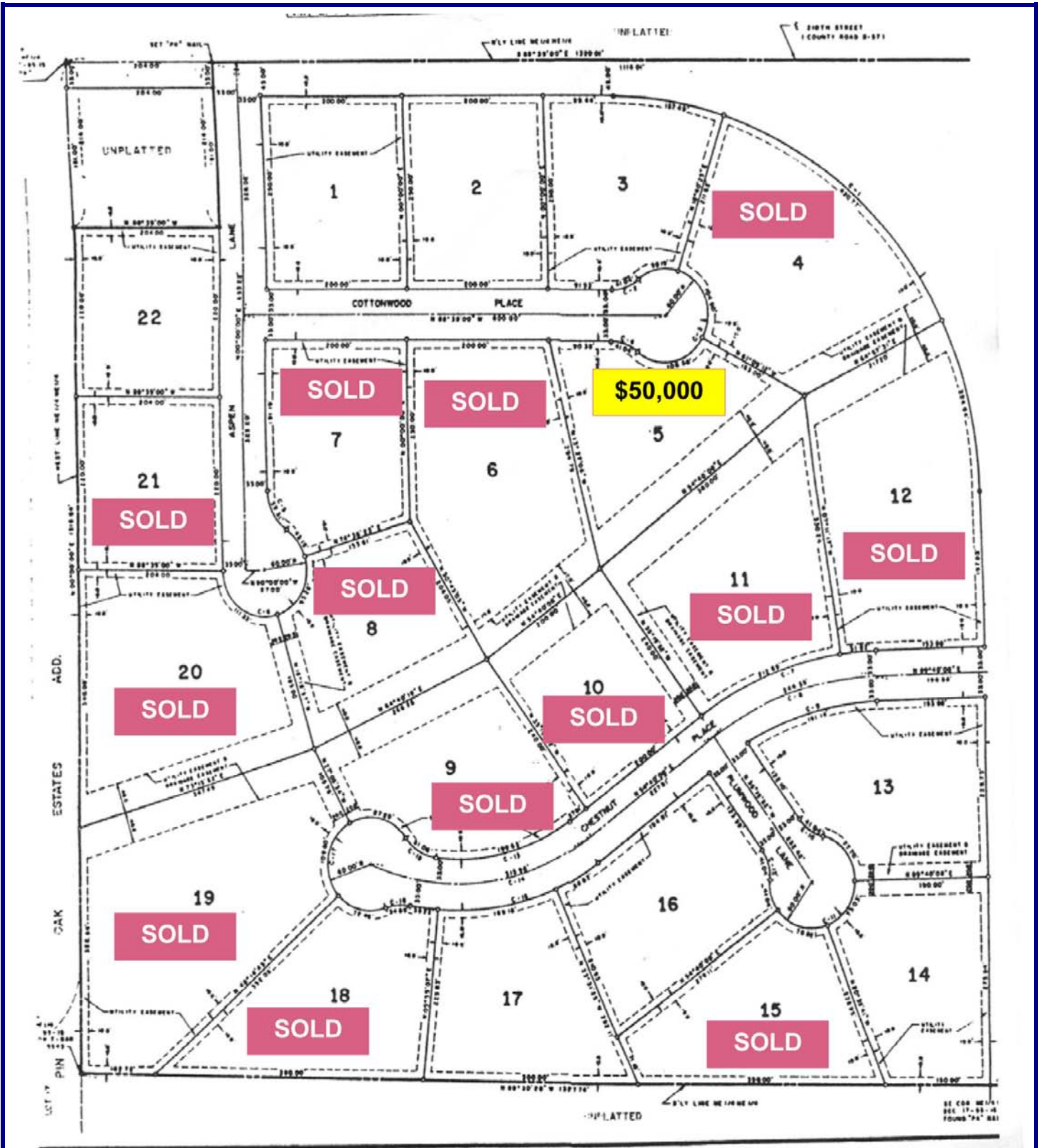


MLS #



Dean A. Stewart, REALTOR®
641.330.2977 Cell
Dean@StewartRealtySells.com

Stewart Realty Company
503 Kelly Street
Charles City, Iowa 50616
641.228.1111 Office
www.StewartRealtySells.com



All Lots, EXCEPT Lot 5, are priced at \$35,000. Lot 5 is priced at \$50,000.